



Institute of microelectronic applications (IMA s.r.o) within EUREKA

Tomáš Trpišovský (Prague, Dec2015)

IMA s.r.o.

*Na Valentince 1003/1, Prague, CZ
+420 251 081 097*

Agenda



- Highlights of IMA activity
- IMA's participation on Eureka programme
- Eureka Eurostars E!8221 LSU
(Large Scale UMTS Location Based Service)
 - submission
 - implementation
 - commercialization
 - follow up

Highlights of IMA activities



1. Identification and access systems

Market position

- IMA is the leading supplier of ID and access systems in the Czech Republic. IMA systems are in long-term use by **3 of the 3 most successful companies in the 2014 Czech Top 100** (www.czechtop100.cz) - **SKODA Auto**, **AGROFERT (Kostelecke uzeniny)** and **CEZ**, as well as by **FOXCONN** or **North Czech Mining Company**.

Certification

- The Company holds security clearing from the National Security Authority of the Czech Republic. Its main **product, the IDSIMA 4-PRO**, is certified **one the highest level**.
- ISO9001-2009 quality certificate

Human resources

- 70 highly qualified** and dedicated specialists with appropriate levels of education

International overlap on R&D projects

- Since 2006 the Company has participated in almost **40 R&D projects** (more than **65% of which** have been international) in which it demonstrated its expertise in applied microelectronics in particular.

2. Research & Development

Financial stability

- Even though more than 40% of the Company's activity is focused on R&D, IMA is capable of financing its development needs itself. It joint-finances its R&D activities with help from European grants.

3. Commercialization



Selected customers

IMA systems are in long-term use by the most important Czech companies and also by the foreign ones.

CEZ GROUP

- For the CEZ energy company - the largest energy group in the Czech Republic and within the whole of Central and South-east Europe – IMA implemented a **single ID, access and meals system** based on contactless chip cards from INDALA/MOTOROLA and MIFARE.
- This comprehensive system also contains solutions for bus transport, vending machines, vehicle monitoring (a solution from the RADIUM company) and print reporting (a solution from the YSOFT company).
- In total, **more than 40 000 ID cards** and 1 300 sensors have been installed in more than 70 facilities.
- PKI, NFC, biometric and other technologies have been used.
- Links were established between the IDSIMA 4-PRO system and SUN ID management.

Power plants

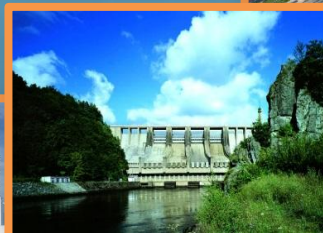
Prunerov, Chvaletice a další (celkem 11)

Hydropower plants

Dlouhe Strane, Dalesice and other (9 in total)

Nuclear power plants

Temelin
Dukovany



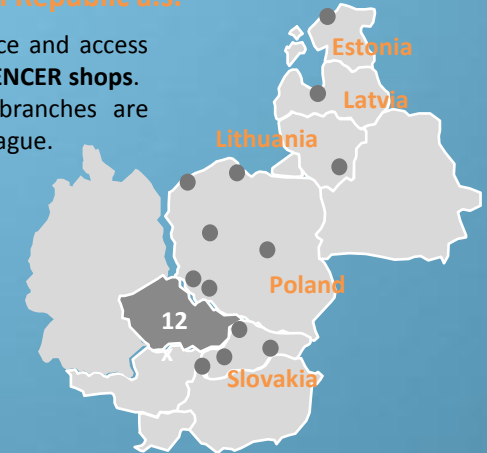
SKUPINA ČEZ

MARKS & SPENCER Czech Republic a.s.

- IMA supplied its attendance and access system to **25 MARKS & SPENCER shops**.
- Czech and international branches are managed centrally from Prague.

57 000
loyalty cards

MARKS &
SPENCER



SKODA AUTO a.s.

- The IDSIMA 4-PRO access system has been in use in the SKODA AUTO factories in Mlada Boleslav, Cesana, Vrchlabi and Kvasiny since 2004.
- The number of registered cards has reached more than **30 000**. More than 180 readers have been installed and c. 35 instances of PCMaster LEGIC technology.
- Currently the e-Vstup (e-Entry) project is underway (turnstiles & barriers).

ŠKODA

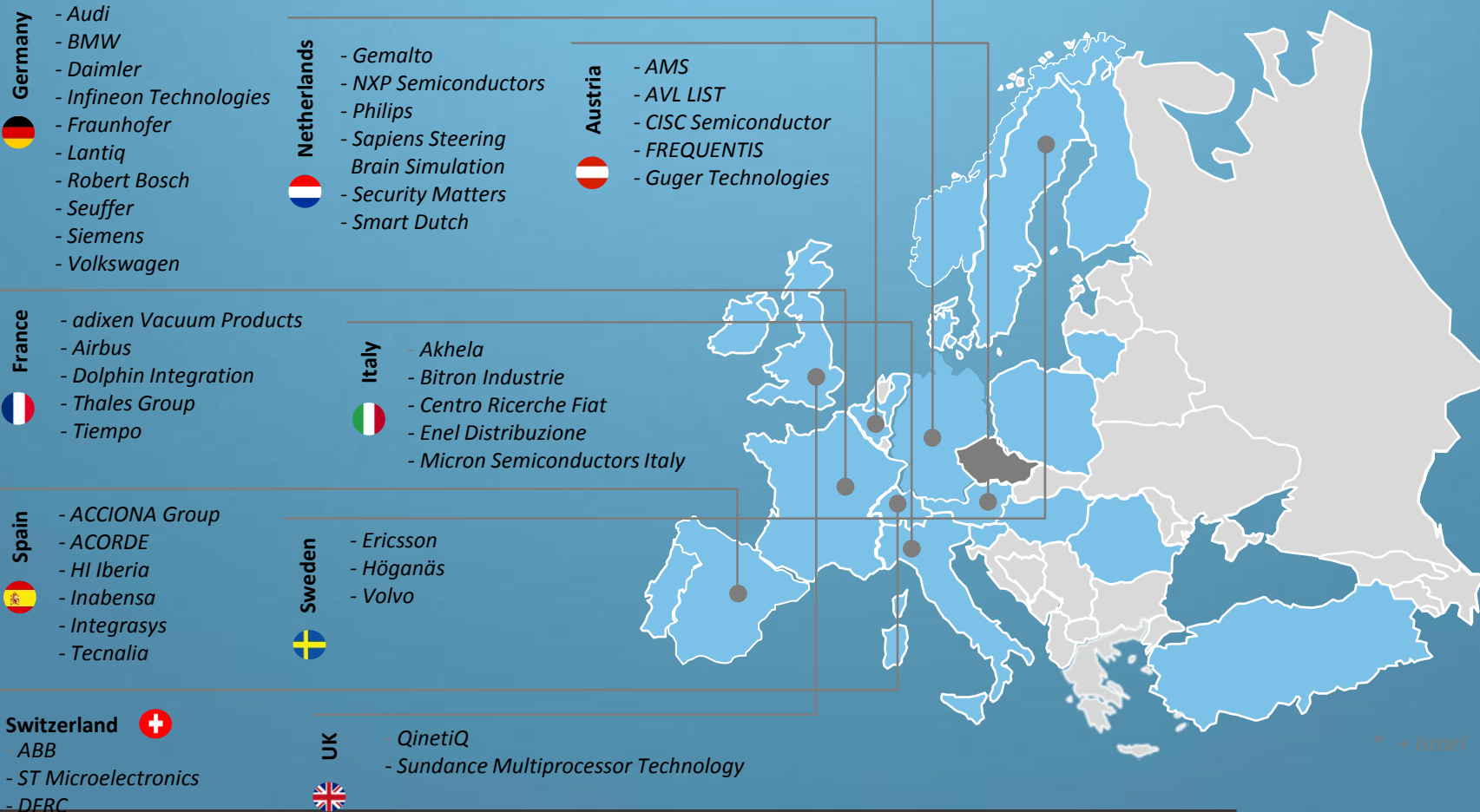


R&D partners



In 2014, the Company **worked on R&D projects with more than 250 partners**. More than 2/3 of these partners made up a trading company, with the remaining 1/3 from universities, research institutes and other academic institutions.

Selected business partners



Academic partners



Selected academic partners

Czech Republic <ul style="list-style-type: none">Charles University (<i>First Faculty of Medicine</i>)CVUT - Czech Technical University in PragueBrno University of Technology (<i>Institute of Microelectronics, CEITEC</i>)Technical University Liberec	United Kingdom <ul style="list-style-type: none">Royal Holloway and Bedford New College, University of LondonScience and Technology Facilities CouncilThe University of BristolThe University of ManchesterThe University of SheffieldUniversity of Sussex	Greece <ul style="list-style-type: none">Harokopion University of Athens	Spain <ul style="list-style-type: none">Fundacion Tecnalia Research & InnovationInstituto Tecnologico de InformaticaUniversidad de SevilleUniversidad Politécnica de MadridUniversitat Autònoma de BarcelonaUniversitat Politècnica de CatalunyaUniverstitat de Girona	Sweden <ul style="list-style-type: none">Chalmers University of TechnologyKTH Royal Institute of TechnologyLulea University of Technology
Germany <ul style="list-style-type: none">Eberhard Karls University TübingenFraunhofer InstituteFriedrich Alexander University ErlangenHochschule Amberg-WeidenLeibniz University HannoverTU BraunschweigTU DortmundTU KaiserslauternTU DarmstadtTU Dresden	Netherlands <ul style="list-style-type: none">Eindhoven University of TechnologyThe Delft University of TechnologyUniversity Medical Center Utrecht	Slovenia <ul style="list-style-type: none">Jožef Stefan Institute		Romania <ul style="list-style-type: none">Institutul de Cercetare-Dezvoltare si Inovare POLITEHNICA
	Israel <ul style="list-style-type: none">Technion, Israel Institute for Technology	Norway <ul style="list-style-type: none">University of Oslo	Italy <ul style="list-style-type: none">Universita Di BolognaUniversità del SannioUniversità di PerugiaUniversity of L'AquilaPolitecnico di TorinoSapienza Università di RomaUniversità Degli Studi di FirenzeUniversità Degli Studi di PaviaUniversità Degli Studi di CagliariUniversità Degli Studi di Genova	Finland <ul style="list-style-type: none">University of Eastern FinlandUniversity of Oulu
	Latvia <ul style="list-style-type: none">Riga Technical University		Austria <ul style="list-style-type: none">Austrian Institute of TechnologyFH JoanneumTU GrazTU Vienna	Denmark <ul style="list-style-type: none">Technical University of Denmark
			Portugal <ul style="list-style-type: none">Instituto de TelecomunicacoesInstituto Superior de Engenharia do PortoINESC-ID LISBOA	Poland <ul style="list-style-type: none">Gdansk University of TechnologyWarsaw University of Technology

IMA's engagement in Eureka



- **Eurostars:** 2009 InSider (Eurostars Success Story),
2013 In3DG,
2014 CityFlow,
2015 LSU
ongoing Face2Phone Fusion between video analytics and mobile phones for large-scale scenario
- **CATRENE:** 2015 EM4EM (CATRENE Innovation Award 2014)
ongoing CORTIF Coexistence Of RF Transmissions In the Future & **H2O** Human to Objects "Easy Interactions in the Smart City"
- **EURIPIDES:** missing national budget



Eurostars LSU - Case Study



Project: Large Scale UMTS Location Based Service

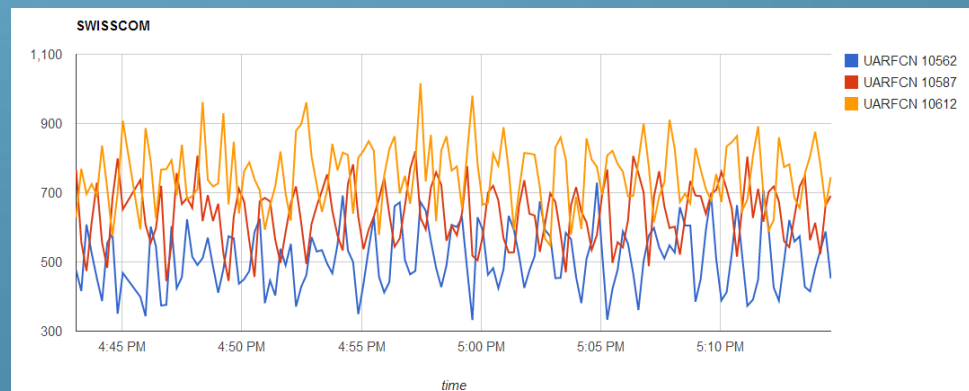
Submission / Prerequisites:

- DFRC (Swiss), IMA (CZ), Red Ninja Limited (GB)
- Eurostars CityFlow follow up
- ECO system: FP7 MATTHEW, ECSEL GALAXY (concept),
TAČR ALFA Secure Systems for Electronic Services User
- In line with IMA's internal Research road map
- Clear vision of implementation
- Tangible exploitation & spill over effect



Goal & Implementation:

- LBA UTMS sensor
- LBA sense mobility API
- Data acquisition server
- Generic data analyser
- Data2application API

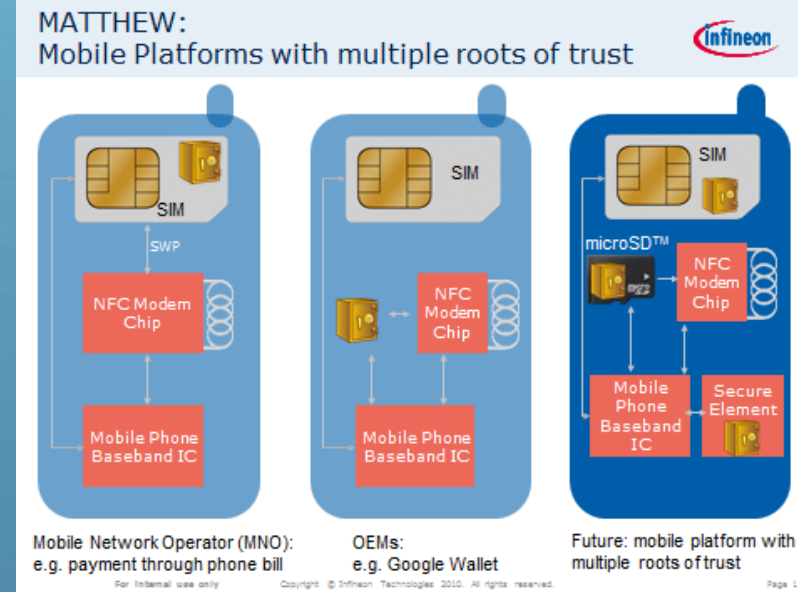




LSU versus „wireless“

Within IMA security / access control systems

- **Wireless sensors** detect only limited set of mobile devices and fit for proprietary IDM. The device takes the role of add on identifier...
- **LSU sensors** shall bring an other security factor due the holistic performance across the whole mobile fleet
- IMA entered the development of two tools in order to foster exploitation:
 - **NFC Porter PRO** (with remote enrollment)
 - Independent **SD security module** for mobile phones (FP7 MATTHEW)

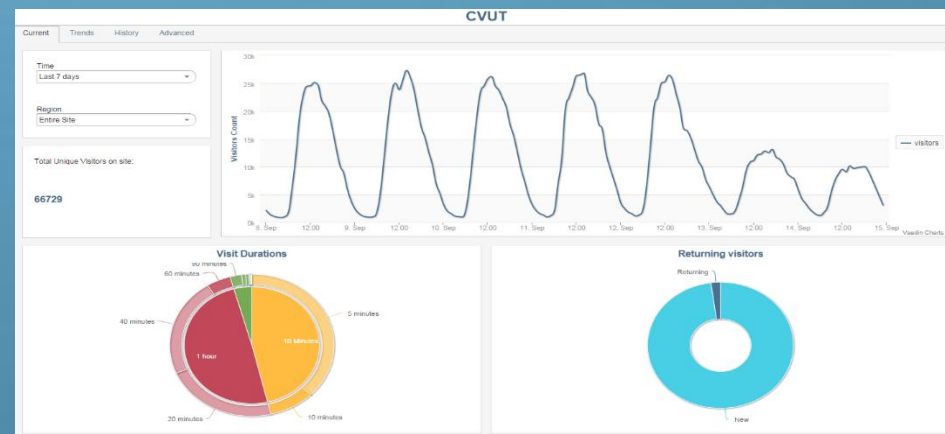


Synergies: IMA RSW04 readers (RFID,NFC,BLE)

Exploitation & spill over effect :

TECHNICAL ISSUES

- ❖ Extension of IDSIMA K4 in terms of management of outdoor location data.
- ❖ Tracking and alerts mechanism for access control systems.



LSU



Exploitation & spill over effect :

NON - TECHNICAL ISSUES

- ❖ Assessment of LSU compliancy with regulatory base across EU.
- ❖ Support for public LSU service acceptance.
- ❖ Data acquisition, behaviour profiling, security improvement, business intelligence based on LBA
<https://www.youtube.com/watch?v=-txAoL4donQ#t=10>

Envisioned LSU pilot sites



- Development and testing site at IMA HQ
- Real-life and load testing site at CVUT (35.000+ active users)
- Industrial site in North Bohemian coalmine / ČEZ





Thank you
for your attention

www.ima.cz